

YEAR 2018

COVERAGE (B) STATION 2209

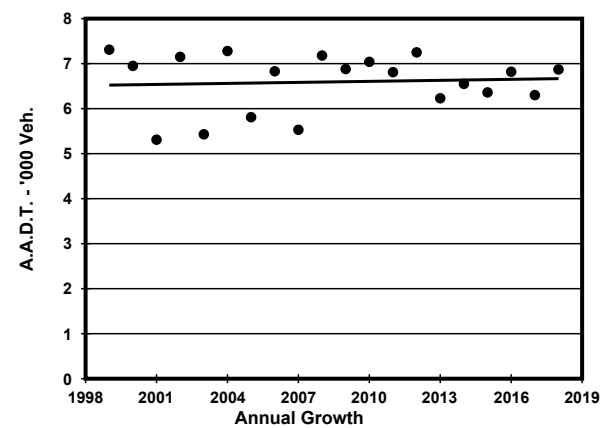
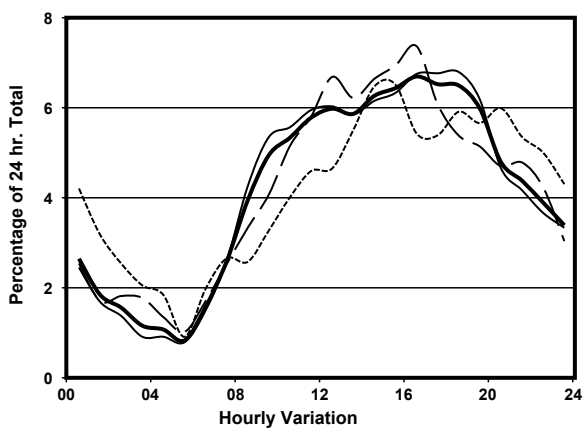
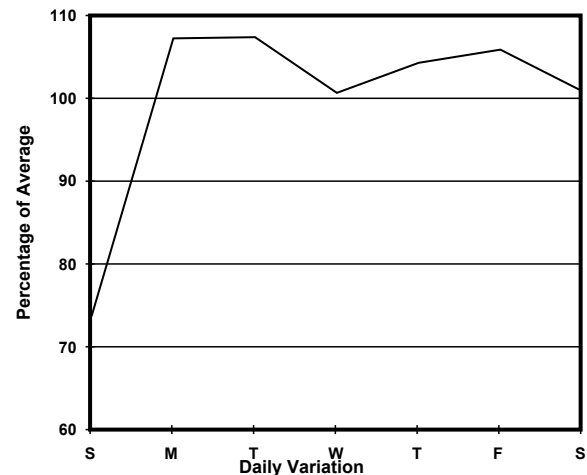
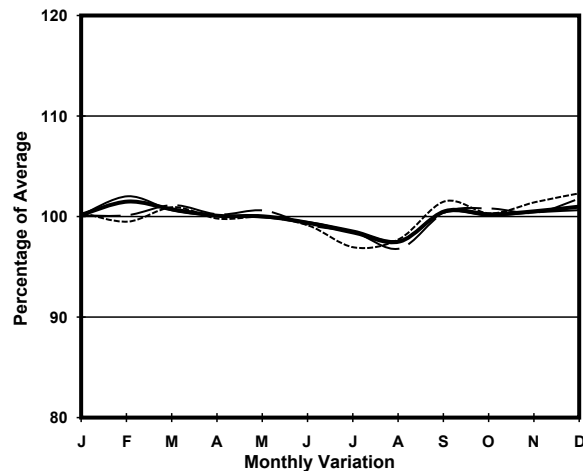
ROAD NETWORK MAJOR

ROAD TYPE DISTRICT DISTRIBUTOR

LINK DES VOEUX RD C (from MORRISON ST to QUEEN VICTORIA ST)



1. TRAFFIC FLOW VARIATION AND GROWTH



— All day — Mon.- Fri. Sat. - - - - - Sun.

2. TRAFFIC CHARACTERISTICS (BY DIRECTION)

Parameter	All - Day	Mon. - Fri.	Sat.	Sun.
EAST BOUND				
A.A.D.T.	4640	4970	4900	3230
R 12 / 24 - %	66.5	68.5	65.9	52.7
R 16 / 24 - %	84.2	85.7	84	74.1
AM Peak Hour	0900-1000	0900-1000	0900-1000	0900-1000
One-way flow at AM peak hour	210	250	190	80
T - % (AM)	-	11.4	-	-
PM Peak Hour	1600-1700	1600-1700	1600-1700	1800-1900
One-way flow at PM peak hour	320	340	380	180
T - % (PM)	-	9.3	-	-
Prop.of commercial vehicles - 16 hr.	-	9	-	-
WEST BOUND				
A.A.D.T.	2230	2350	2140	1910
R 12 / 24 - %	67.6	68.2	66.8	64.3
R 16 / 24 - %	89.3	89.9	87.6	87.2
AM Peak Hour	0900-1000	0900-1000	0800-0900	0900-1000
One-way flow at AM peak hour	130	140	100	90
T - % (AM)	-	100	-	-
PM Peak Hour	1800-1900	1800-1900	1700-1800	1800-1900
One-way flow at PM peak hour	160	180	140	120
T - % (PM)	-	100	-	-
Prop.of commercial vehicles - 16 hr.	-	88.6	-	-

3. OTHER INFORMATION AND COMMENT

Coverage (B) Station 2209
Year 2018

4. Vehicle classification and occupancy - Monday to Friday

Time		Class of vehicle									
		Motor Cycle	Private Car	Taxi	Private LB	PLB	Goods veh.		Non Fr. Bus	Fr. Bus	
							Light	M & H		SD	DD
0700-0800	Pro	4.3	8.6	8.6	0.0	0.0	12.9	0.0	0.0	0.0	65.6
	Ocp	1.0	2.5	1.0	0.0	0.0	1.3	0.0	0.0	0.0	15.9
0800-0900	Pro	0.0	19.0	16.9	0.0	0.0	14.8	0.0	2.1	0.5	46.6
	Ocp	0.0	1.3	2.1	0.0	0.0	1.7	0.0	1.0	11.0	17.6
0900-1000	Pro	5.0	21.6	8.3	0.0	0.0	23.2	1.7	0.0	0.0	40.2
	Ocp	1.0	1.1	1.6	0.0	0.0	1.8	1.0	0.0	0.0	12.6
1000-1100	Pro	1.3	29.2	22.6	0.0	0.0	14.6	2.7	0.0	0.0	29.6
	Ocp	1.0	1.2	1.3	0.0	0.0	1.4	2.5	0.0	0.0	11.5
1100-1200	Pro	9.0	32.3	12.9	0.0	0.0	19.4	0.0	0.0	0.0	26.5
	Ocp	1.0	1.2	1.5	0.0	0.0	1.6	0.0	0.0	0.0	16.1
1200-1300	Pro	5.1	39.7	17.9	1.3	0.0	7.7	0.0	1.3	0.0	26.9
	Ocp	1.0	1.3	1.4	9.0	0.0	1.5	0.0	1.0	0.0	20.5
1300-1400	Pro	4.1	35.9	15.2	1.4	0.0	13.8	0.0	0.0	0.3	29.3
	Ocp	1.0	1.3	1.7	1.0	0.0	1.3	0.0	0.0	23.0	21.0
1400-1500	Pro	1.2	50.2	9.6	2.4	0.0	10.7	0.0	0.0	0.0	26.0
	Ocp	1.0	1.4	1.9	2.5	0.0	1.2	0.0	0.0	0.0	18.3
1500-1600	Pro	6.0	46.6	7.5	0.0	0.0	7.5	0.0	0.0	0.0	32.3
	Ocp	1.0	1.1	1.8	0.0	0.0	1.4	0.0	0.0	0.0	23.9
1600-1700	Pro	8.3	38.9	8.3	1.2	0.0	10.6	0.0	1.2	0.0	31.6
	Ocp	1.0	1.2	1.0	4.0	0.0	1.6	0.0	4.0	0.0	29.5
1700-1800	Pro	1.2	48.4	9.9	0.0	0.0	7.5	1.2	0.0	0.0	31.7
	Ocp	1.0	1.4	1.5	0.0	0.0	1.5	1.0	0.0	0.0	51.3
1800-1900 Peak hour	Pro	0.0	54.3	11.2	0.0	0.0	5.6	0.0	0.0	0.0	28.8
	Ocp	0.0	1.2	1.9	0.0	0.0	1.5	0.0	0.0	0.0	61.6
1900-2000	Pro	3.2	38.9	19.5	2.2	0.0	2.2	1.1	0.0	0.3	32.7
	Ocp	1.0	1.3	1.4	1.0	0.0	1.5	1.0	0.0	31.0	49.6
2000-2100	Pro	9.2	22.0	23.9	0.0	0.0	3.7	0.0	0.0	0.0	41.3
	Ocp	1.0	1.3	1.2	0.0	0.0	1.0	0.0	0.0	0.0	41.9
2100-2200	Pro	5.2	31.3	27.8	0.0	0.0	0.0	0.0	0.0	0.4	35.2
	Ocp	1.0	1.3	1.1	0.0	0.0	0.0	0.0	0.0	13.0	40.7
2200-2300	Pro	0.0	31.6	11.3	0.0	0.0	4.5	4.5	0.0	0.6	47.5
	Ocp	0.0	1.6	1.6	0.0	0.0	1.0	1.5	0.0	20.0	39.6
16 hours	Pro	3.9	37.2	14.4	0.6	0.0	9.7	0.6	0.3	0.1	33.2
	Ocp	1.0	1.3	1.5	3.0	0.0	1.5	1.6	2.0	19.6	31.1

Legend

Pro. Proportion of vehicles in % (Sum may not add up to 100% due to figure rounding)*

Ocp. Average occupancy of vehicles including both driver and passengers*

M&H Medium and Heavy

***** All traffic data are collected from combined bounds except for one way traffic